

RIDER AND TECHNICAL SHEET



**On stage show for 10 musicians and 3 dancers,
+ 2 technicians
new creation by RED LINE CROSSERS.
- A participatory show for all ages -**

We do not ask for more than we need, to be certain that we will have enough.

We can always adapt to specific conditions, but all we ask is that you let us know in advance so that we can work out solutions together. Please never present us with a fait accompli on the day of the show.

Please do not hesitate to contact us as soon as possible if you encounter any difficulties.

This document is a binding part of the contract. Please read it carefully and return it initialled on each page. If these clauses are not respected, the artistic team has the right to refuse to perform.

***It is essential to contact the artistic referent at least 3 months before the date:
Geoffroy Langlais / + 33 6 88 79 20 78 / glanglais@engrenages.eu***



© Nico M

This project is supported by:

an Engrenage[s] production

TECHNICAL RIDER

FOH

An active PA sound system equipped with a D&B, Meyer or L-acoustic type subwoofer.

The power and range of the system should be adapted to the venue's capacity and architecture.

Please provide a professional switchboard such as Midas (Pro or H series), Yamaha (PM or CL) or Allen&heath (D-Live).

The switchboard should be located in the centre of the system, at the height of the audience and under no circumstances should it be placed under a balcony, in an aquarium booth or at the top of a tier.

MONITORS

32 inputs console / 10 auxiliaries mini. 2 TC M2000 reverb motors, PCM.

7 stage monitors (D&B MAX 15, M4 type) with 7 independent circuits (1 equalizer per circuit) (see stage plan)

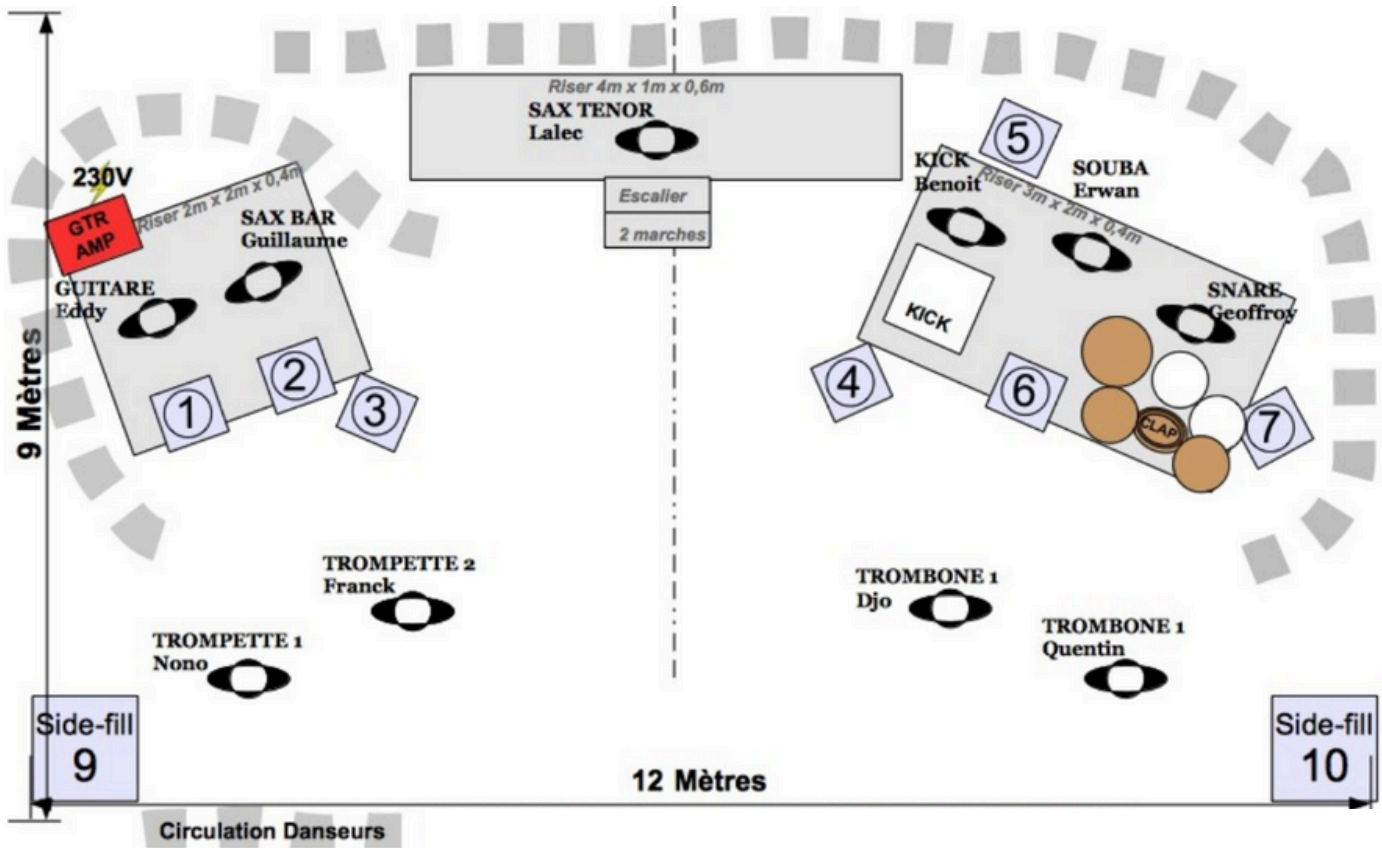
2 D&BY7/B6 side fills (**mandatory**). High frequency at 2.5m min.

PATCH

	INSTRUMENT	MIC	STAND
1	KICK frappe	M201	SMALL
2	KICK Reso	M88	SMALL
3	Cymbale sur kick	M201	TALL
4	Snare 1	904	
5	Snare 2	904	
6	Clap	57	SMALL
7	OH	535	TALL
8	Soubassophone	D6	
9	GTR	906	
10	Sax Bar	XLR	
11	Sax tenor	XLR	
12	Trompette 1	XLR	
13	Trompette 2	XLR	
14	Trombone 1	XLR	
15	Trombone 2	XLR	
16	Vx Tp 1	B58 HF	TALL
17	Vx Tp 2	B58 HF	TALL
18	Vx Tb 1	B58 HF	TALL
19	Vx Tb 2	5B8 HF	TALL
20	Vx Sax Bar	B58 HF	TALL
21	Vx Sax Alto	B58 HF	TALL

TECHNICAL RIDER

STAGE PLOT

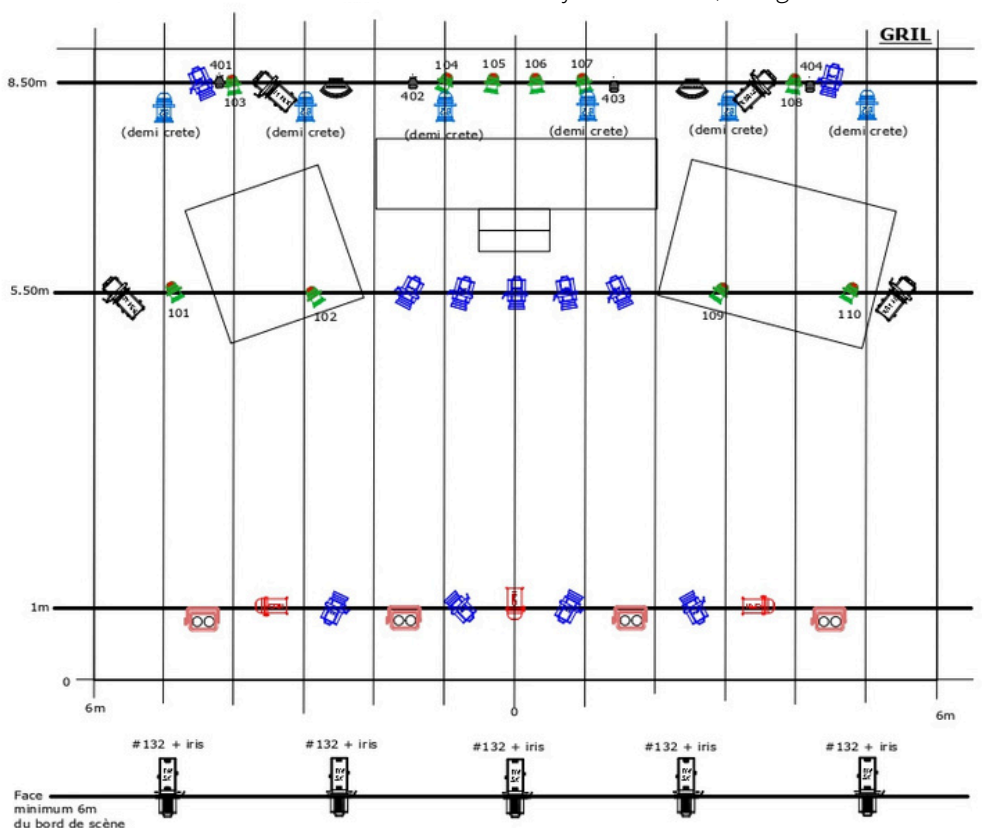


The stage must be covered with black dance mat

5 et 7 monitors are to be placed at the same height as the stage stands. Please provide a flight case to elevate the guitar amp (0.8/1m).

PLAN DE PRINCIPE

Des adaptations sont relativement possibles, à définir avec Loïc, le régisseur.



MERCI DE FOURNIR

- 4 Dec 2K 7135X + 4 Porte Gobo
- 5 Dec 2K 7145X + 5 Gel Rosco 132 + 5 iris
- 11 PC 1000 (lentille claire / pas de fresnel)
- 6 PAR CP 62 + Gel Lee Filter 202
- 7 PAR CP 61
- 4 FL 1300 ou Horizode 1Kw ou Cyclode (par ordre de préférence)
- 14 Par Led RGBW (type Cameo Z120 ou Rush) avec **ZOOM** impérativement
- 4 Horizode 1Kw ou Cyclode ou FL 1300 (par ordre de préférence)
- 10 Platinas de sol
- 2 Pieds **H3m minimum**
- 2 Versatiles fournis par Engrenage[s]
- 4 Nano Beam cameo fournis par Engrenage[s]
- 1 Machine à **brouillard** type Unique + ventilo (+ 1 MDG 3000 Co2 et Turbine en extérieur)
- 42 gradas 2Kw
- Data 3b et secteur pour NanoBeam Cie
- Cablage secteur/Data/Multi/Splitter etc
- Gaff noir, Blanc et Gaff Alu noir

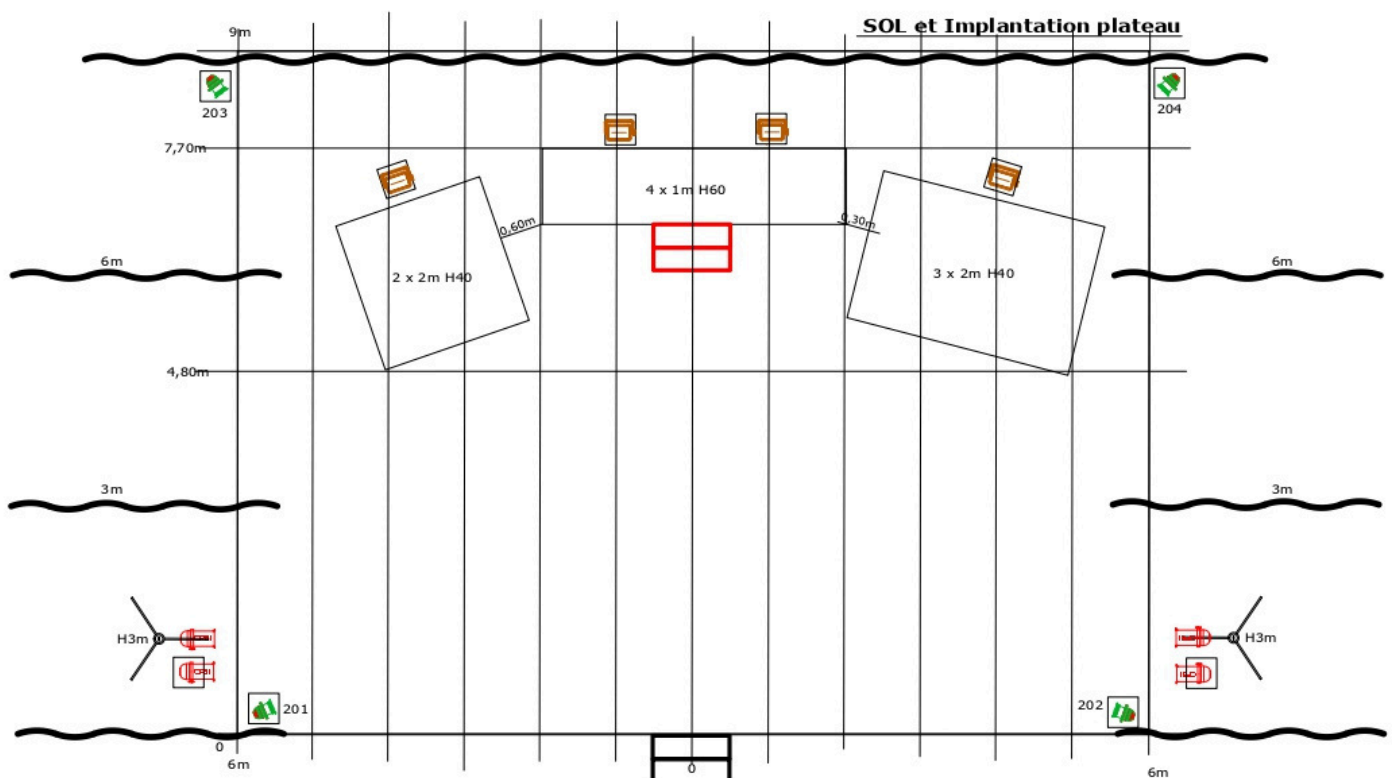
TECHNICAL RIDER

SCHEMATIC PLAN *Adaptations are relatively possible, to be defined with Loïc, the stage manager.*

Engrenage[s] will supply the console, the 4 gobos and mini beams 401 to 404 (please provide Data 3b up to the splitter + 16A power supply) and the 2 Versatiles.

- Minimum height under grill / bridge system 6.50m
- Room and stage with the possibility of complete blackout
- FOH desk should be in the middle of the auditorium (no aquarium booths or at the top of the tiers)
- The lighting plot must be in place, wired and tested by the time we arrive to save time and start setting up as soon as possible.
- Please provide a ladder or a gondola at the appropriate height for your venue for the adjustments (in particular the ridge spotlights (beam angle: 4.2° - 38.7°).
- Spotlights 21 to 26 should be set up as ridges (or half-ridges), otherwise they won't fit :))
- A plan adapted to your venue with the circuit numbers will be sent to you once the date has been confirmed.
- The lighting kit can fit into 1 universe. It can be used for up to 2 universes. DMX 5b on console
- The addresses of the PAR LEDs will be those indicated in the box on the

101	#1.100
102	#1.115
103	#1.130
104	#1.145
105	#1.160
106	#1.175
107	#1.190
108	#1.205
109	#1.220
110	#1.235
201	#1.250
202	#1.265
203	#1.280
204	#1.295



Minimum size of the stage: 11m x 9m, clean, black and draped according to the plan above.

Please supply 7 2m x 1m stage platforms according to the plan above - with black **occulting** platform skirts, 1 staircase in front of the stage to go to the auditorium (Engrenage[s] will provide the red one on the stage)

1 clean black dance mat with dimensions adapted to your stage over the entire surface

As with any live music concert, and even if we comply with the authorised maximum sound levels, it is always advisable to provide individual hearing protection free of charge, so that members of the public can choose whether or not to use it, depending on their age and sensitivities.

RIDER

DRESSING ROOMS

DRESSING ROOMS

Close to the performance venue, the artists will need two dressing rooms (to respect the gender mix of the group and to prevent Sexual and Gender-Based Violence and Harassment) that are clean and heated, out of sight and can be locked or guarded and equipped with a table and chairs, mirrors, clothes racks with hangers, access to electrical sockets and toilets nearby.

Showers and towels must be made available to the artists after the performance.

In the event of several performances during the day or several successive days of play, a washing machine (with detergent), tumble dryer and iron (with ironing board) must be provided.

CATERING

Please provide bottled water (preferably 50cl) or, alternatively, a water source where we can fill our water bottles and gourds, snacks including small cakes, honey, fruit, cold drinks (fruit juices, soft drinks, local craft beers if possible) and hot drinks.

MEALS

If the contract includes a meal or meals depending on arrival time, please provide 15 to 16 hot, balanced meals **that respect dietary requirements.**

ACCOMMODATION

If accommodation is included in the contract, the team must be accommodated in **single** rooms with breakfast.

No twin rooms and please respect the gender mix.

Depending on the availability of accommodation in the area, the team may agree to stay in a gîte such as the Gîte de France.

Accommodation must be close to the venue (no more than 15km away).

THIS SHOW IS REGISTERED WITH SACD AND SACEM

SACEM PROGRAM NUMBER: 30000146002

<https://www.engrenages.eu/projet/we-are/>

Contacts

Logistics : Claire Jouault / + 33 6 14 31 14 09 / cjouault@engrenages.eu

Artistic referent : Geoffroy Langlais / +33 6 88 79 20 78 / glanglais@engrenages.eu

Sound : Mathieu Roguez / mathieu.roguetz@gmail.com / +33 6 98 11 85 04

Lights : Loïc Chauloux / lccxbox@gmail.com / +33 6 22 30 39 93

Communication and negotiation : Lucie Lefrançois / +33 7 52 03 20 46 / llefrancois@engrenages.eu

Administration : contact@engrenages.eu

ENGRENAGE[S]

26 rue Léon RICOTTIER

35 000 RENNES

Tél : 02 22 03 02 13

N° siret 45081909900034

Code APE 9001Z

L-R-21-14719 | L-R-21-14720

· Générateur de projets artistiques ·

ENGRENAGE[S]

